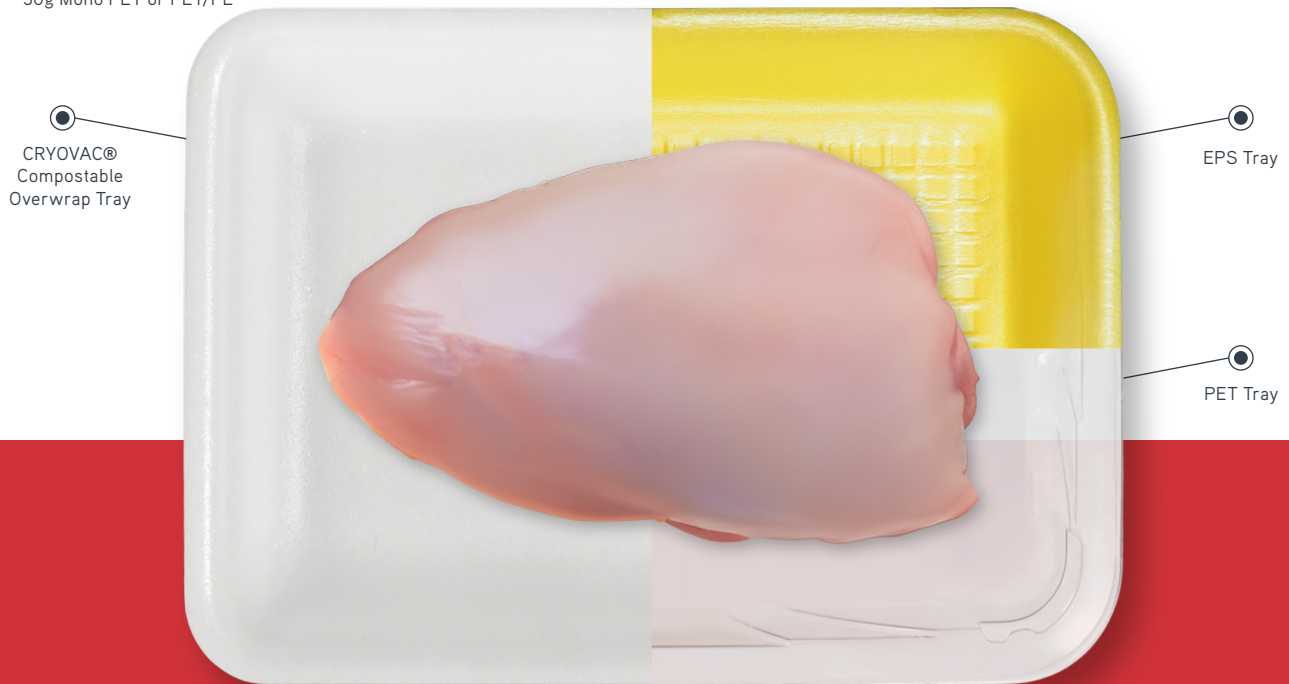


# CRYOVAC® Compostable Overwrap Tray

Crafted from renewable cellulose, our compostable tray is not just about sustainability – Testing shows CRYOVAC® compostable overwrap trays match shelf-life performance of EPS and PET trays and have fewer leaks than PET trays. Plus, they don't require new equipment to use – simply drop in to existing overwrap equipment.

	CRYOVAC® Compostable Tray	PET Tray	EPS Tray
Overwrap Applications	✓	✓	✓
Recyclable	✗	✓ check locally	✗
Lightweight	✓	✗	✓
Compostable	✓	✗	✗
CO <sub>2</sub> Reduction*	✓	✗	✗

\*Based on internal data comparison to 30g Mono PET or PET/PE



## Certified Compostable

Crafted from renewable cellulose, devoid of PFAS/PFOA, and certified as industrially compostable.\*

\*Certification and end of life refers to tray only. Does not include, film, pad, or sticker, etc.



## Machine Compatible

Thoroughly tested and ready for application on traditional overwrap machines without requiring any modifications or additional equipment investment.



## High Performance

Engineered for increased velocity and minimal tray friction, this design aims to mitigate leaking rates during transportation and handling.